



LOCKSMITHING

METALWORKING

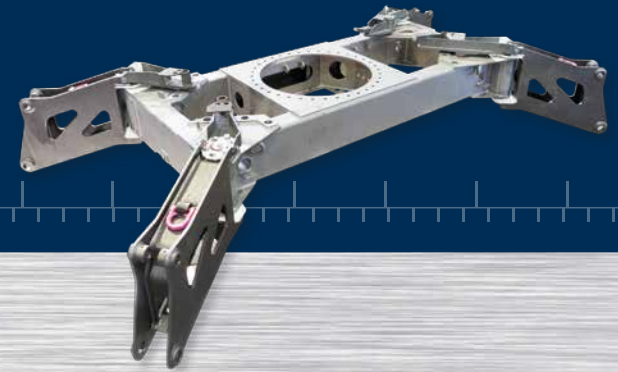
ASSEMBLIES

COMPANY DETAILS

01

- Family-owned engineering company
- Established in 1996
- More than 125 employees
- Strategic location in the Czech Republic with an easy access on the EU-markets
- International co-operation – 70% of our production has been exported to Germany, Austria, Switzerland and the Netherland
- Permanent growth of sales in the last 5 years
- Three fields of business – Locksmithing, Metalworking, Assemblies
- Annual investment in the innovation and technology

Company ZAKO Turčín is able to offer its customers the production capacity of about 15 000 standard hours monthly.



Quality policy

Basic goal of our company represents the improvement of our Quality Management System. Since 2008 we have implemented a Quality Management System in accordance with ISO 9001-2009. Our priority task is to become a reliable supplier for our customers.

We meet following certificates:

ISO 9001 – Quality Management System

ISO 3834-2 – Quality Management System for welding

EN 15085 – CL1 – certification for the production of rail vehicles

Key goals of our production:

- In time
- In required top quality
- With minimum costs (with affecting the above)

Our strenghts:

- Efforts focused to meet all customer's requirements
– range, volume as well as delivery terms
- Trained and skilled production team
- New IT-System
- Customer tailored issue of metric reports

OUR OFFER OF PRODUCTS AND ENGINEERING SERVICES

02

Our company is mainly engaged in the production of precision machined and locksmithed parts with the possibility of subsequent assembly.

The main representatives of our assemblies:

- Chip conveyors and filtration station for machining tools
- Manipulators for printing plants
- Non-standard conveyor chains for the industrial and food processing establishments

We offer following engineering services:

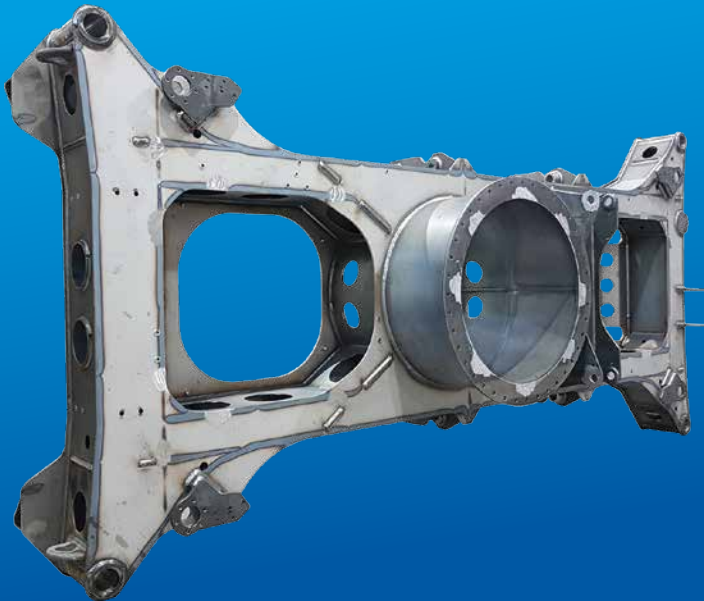
- Locksmithing
- Metalworking
- Assemblies
- Surface finishes
- Services, related to products, their delivery and transport



LOCKSMITHING

03

- Production of covers and parts from sheet metal – black, stainless and aluminium ones
- Weldments up to the weight of 5000 kg including annealing, sand blasting and machining
- Welding of standard steel, stainless steel, aluminium and copper
- Robotic welding up to measurements of 6 000 mm and a weight of 4 000 kg
- Pressings manufactured on the eccentric presses – 10-80 tons
- We provide burnt components using laser, plasma and flame – up to the thickness of 250 mm



04

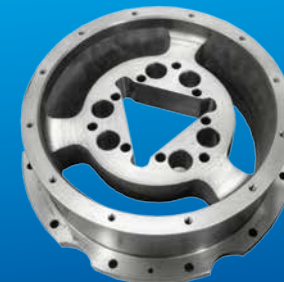
- Delivery time within 6 weeks of ordering according to the complexity of the parts
- Possibility of framework agreements



METALWORKING

05

- **Machining on CNC five axis machines** - turntable 1000 mm
(travels in axis X max. 1000 mm, Y max. 1800 mm, Z max. 690 mm, diameter of turntable - 1000 mm)
- **Machining on CNC MCFV vertical machines**
(travels in axis X max. 2000 mm, Y max. 800 mm, Z max. 720 mm)
- **Machining on CNC lathes**
(diameter up to 720 mm x turning length of 2200 mm)
- **Horizontal CNC machining**
(travels in axis X max. 5000 mm, Y max. 2500 mm, Z max. 2200 mm)
- **Conventional milling**
(travels 1800 mm x 600 mm x 700 mm)
- **Turning**
(diameter up to 500 mm x turning length of 1500 mm)
- **Surface grinding**
(maximum dimension of component 650 mm x 2000 mm)



06

- Delivery time within 6 weeks of ordering according to the complexity of the parts
- Special machines
 - Turning and milling centers
 - 6-axis machining centers



ASSEMBLIES, OWN PRODUCTION

07

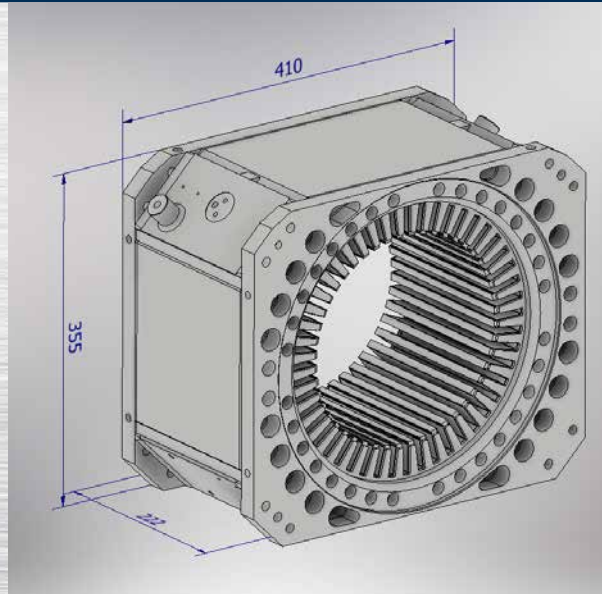
- Chip conveyors
- Production and assembly of light and medium machinery and equipment according to customer documentation
- Delivery time from 4 to 8 weeks of ordering according to the complexity of assembly



STATOR STORY

08

- Preparation technology
- Machining of semi-finished products
- Assembly of the whole
- Robotic welding
- Carousel machining
- 3D measurements
- Issuance of the protocol
- Dispatch of goods



OTHER SERVICES

09

■ Services concerning products, their deliveries and transport

- Heat treatments
- Customer tailored surface treatments
- Packing of supplied products

■ Surface treatment center

- Two painting booths
- Washing and painting of the parts
- Furnace for heat treatment
- Sandblasting

■ Road transport

We own a fleet of MAN, Ford, Renault and Toyota vehicles.

Our truck transports are carried out both nationally and internationally up to a weight of 12 tons.

Premises Provodov



QUALITY MANAGEMENT

10

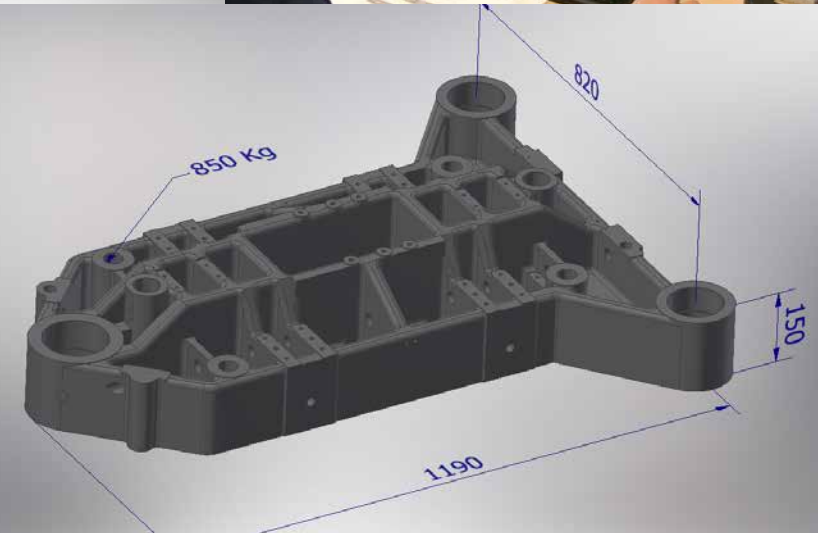
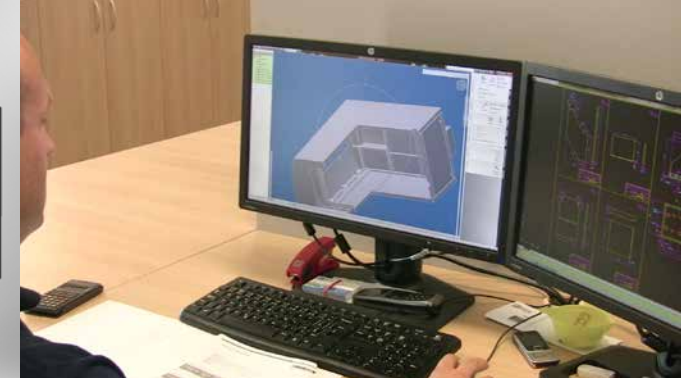
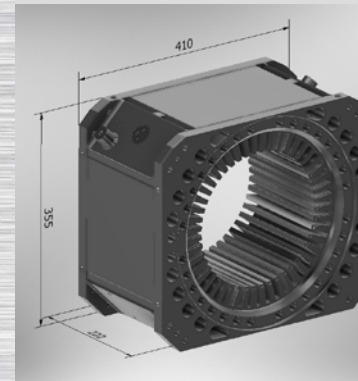
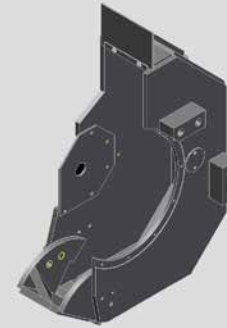
- **Quality of our products has been provided as follows:**
 - Input control
 - Interoperation control
 - Output control
- **Based on customer requirements we'll issue:**
 - Conformity declaration WB 2.1
 - Measurement protocol 3.1
 - Material certificate (Quality assurance of input material)
- **Team of qualified inspectors takes care of Quality Management**
- **Quality is ensured by the latest 3D measuring instruments:**
 - Romer Absolute ARM measuring arms
 - Dea Global Performance
 - Aberlink Zenith too
 - Aberlink Maxim



PRODUCTION TECHNOLOGY

11

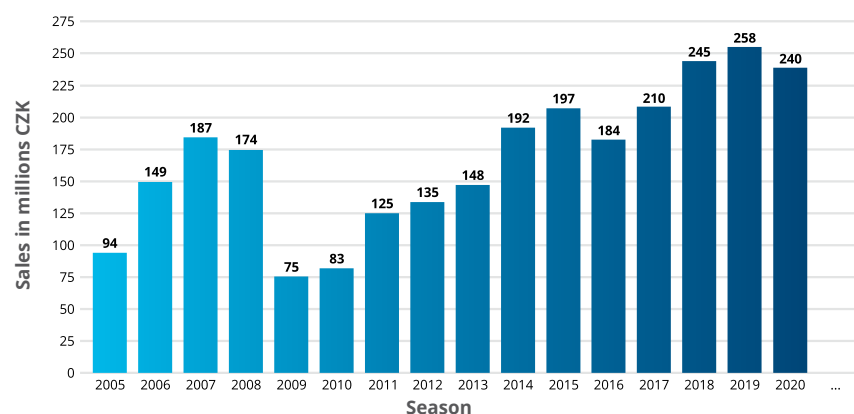
- Department of production preparation has a team of experienced and qualified experts
- Three workers have an EWE qualification
- Space Claim + Autodesk Inventor Programs for creation/modification of STEP Models, Edge CAM for the creation of CNC machine programs.
- The production has been assured by the latest machine park:
 - Turning-milling centers
 - Machining centers – five axis and vertical CNC
 - CNC lathes
 - CNC horizontal boring machines
 - Conventional milling
 - Classic lathes
 - Surface grinding
 - Welding machines
 - Robotic welding
 - Presses and drills
 - Table shears, band saws etc.



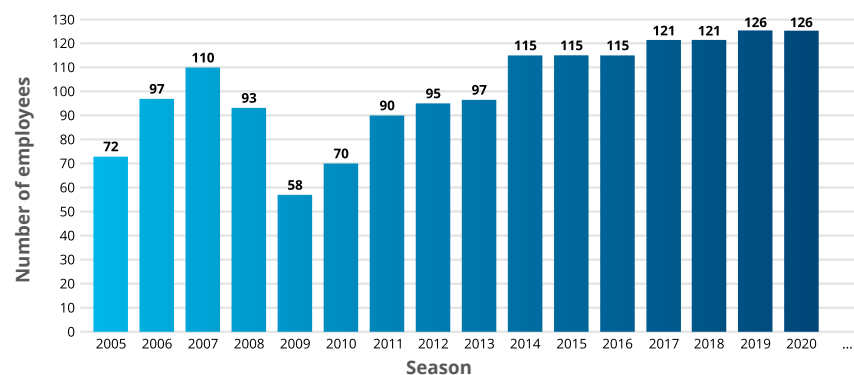
HISTORY AND MILESTONES

12

Sales Development



Number of Employees



Company Milestones

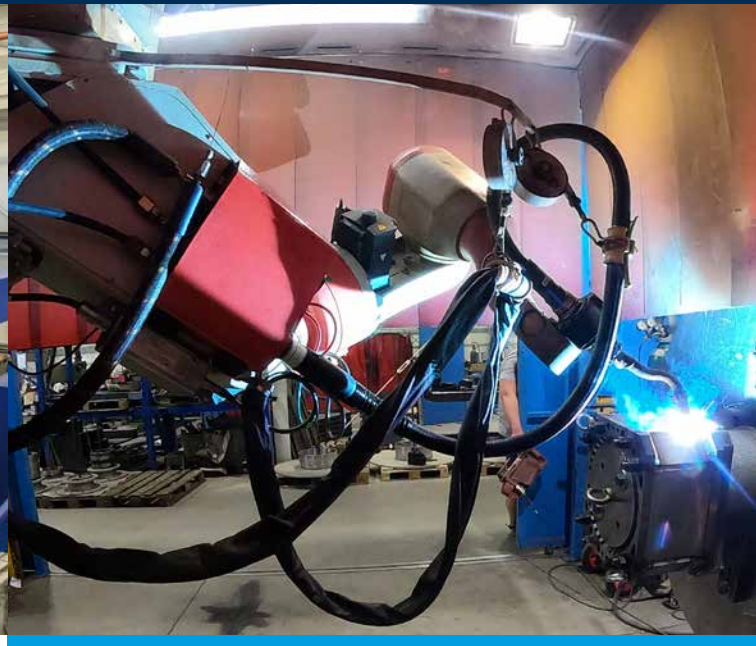
- 1996 Start of activity, founding of the company
- 1999 Purchase of the co-operative farm premises Březnice
- 2006 Construction of the hall D in the business premises Březnice
- 2008 Purchase of the co-operative farm premises
Quality System Certification EN ISO 9001
- 2011 Reconstruction of premises in Provodov as well as construction of the paint shop
- 2012 Realization of training center and administrative building projects
- 2013 Reconstruction and extension of the hall B- machining working, purchase of two machines (GAMMA CTX 2000, DMU 85)
- 2014 Purchase of the horizontal boring machine with the acceleration of 5 m x 2,5 m
- 2015 Robotic welding
- 2018 Significant expansion of machinery - 4 new machines
- 2019 Expansion of the area by 12000 m², new 5 -axis machine MCG 1000 5XT
- 2020 Construction of the surface treatment center in Provodov started
new 6 axis machine RT-3000
- 2021 Celebration of 25 years since the founding of the company

MACHINERY PARK

13

TYPE	PCS	BASIC TECHNICAL PARAMETERS
Turning and milling centre		
EMCO Hyperturn 100 Powermill 2400	1	Turning diameter 720, turning lenght 2200
GAMMA CTX 2000	1	Turning diameter 620, turning lenght 2000
Machining center – six-axis		
MTE RT 3000	1	Travels (X-Y-Z) - 3000 x 1200 x 1500, turntable diameter - 1200
Machining centres – five-axis		
MCG 1000 5XT	1	Travels (X-Y-Z) - 1200 x 1000 x 700, turntable diameter - 800
DMU 85	1	Travels (X-Y-Z) - 1200 x 1040 x 650, turntable diameter - 800
DMU 105	1	Travels (X-Y-Z) - 1400 x 1240 x 690, turntable diameter - 1050
MCV 1220 Power	1	Travels (X-Y-Z) - 1000 x 1800 x 600, turntable diameter - 800
Machining centres – vertical CNC		
MCFV 2080	1	Travels (X-Y-Z) - 2030 x 810 x 810
MCFV 1060	2	Travels (X-Y-Z) - 880 x 480 x 600
MCFV 840	2	Travels (X-Y-Z) - 1020 x 600 x 600
MCV 1270 POWER	2	Travels (X-Y-Z) - 1270x 610 x 720
CNC Lathes		
Mori Seiki SL 403BMC / 800	1	Turning diameter 650, turning lenght 800
GOODWAY GS 200	1	Turning diameter 600, turning lenght 600
Gildemeister 420 linear	1	Turning diameter 420, turning lenght 500
SPR 100	2	Turning diameter 550, turning lenght 500
GOODWAY GLS 200	2	Turning diameter 320, turning lenght 500
S-50	2	Turning diameter 350 turning lenght 550
Horizontal boring machines – CNC		
WHQ 13 CNC	1	Travels (X-Y-Z) - 5000 x 2500 x 2200, table 2000 x 3000
TKP 6511B	1	Travels (X-Y-Z) - 2500 x 1500 x 1200, table 2000 x 1400
Conventional milling machines		
Conventional milling machine	5	Travels (X-Y-Z) - 1800 x 600 x 600
Conventional lathes		
Conventional lathes	4	Turning diameter 350, turning lenght 1000
Welding machines		
IGM 477-S	1	7 – axis robot welding up to 4000 Kg
FRONIUS TPS 320i pulse	2	320 A, compact universal welder
FRONIUS 4000 TransPulsSynergic	4	400 A, welder in the protective atmosphere (alu, stainless steel)
FRONIUS 5000	10	500 A, water cooled welder in protective atmosphere
BN 20	1	Spot welding

TYPE	PCS	BASIC TECHNICAL PARAMETERS
Presses		
LVD Press brakes	2	Pressing force 170 t, bent lenght 4000 mm
Eccentric presses	5	Pressing force 63 t
Hydraulic presses	3	Pressing force 100 t
Surface grinding machines		
BVP 650	1	Travels (X-Y) - 600 x 2000
BVH 1000	1	Travels (X-Y) - 300 x 1000
Drilling machines		
Pillar drilling machines VS-32	8	
Radial drilling machine VR-4	3	
Table shears		
DURMA CNC HGM 3006	1	pressing force 1 t, cutting lenght 3000
Band saws		
BOMAR 240	4	Cutting diameter 240
BIANCO MOD370	3	Cutting diameter 370
BTM 620CNC	1	Cutting diameter 370
Measuring Instruments		
Dea Global Performance	1	Travels (X-Y-Z) - 1200 x 2200 x 1000
Aberling Zenith too 1500	1	Travels (X-Y-Z) - 1000 x 1500 x 600
Aberlink	2	Travels (X-Y-Z) - 510 x 600 x 400
Hexagon Romer Arm RA-7535	2	Range - 3500
Mitutoyo linear height LH 600B	2	
Surface treatment centre		
Painting booth	2	Inner space - 7000 x 4000 x 3500
Blasting box	1	Inner space - 7100 x 4100 x 3500
Suspended blasting machine PG 20X30/4TR	1	max. Diameter 2000, max. Lenght 300
Phosphating	1	
Degreasing cabine	1	Inner space r - 7100 x 4100 x 3500
Freezer dryer	1	pressure dew point - +3°C
Furnace for heat treatment	1	Inner space - 1500 x 1500 x 1500
Vehicle fleet		
Own vehicle fleet	5	load capacity up to 12 tonen





Contacts

ZAKO Turčín spol. s r.o.

Březnice 363
okr. Zlín 760 01
Česká republika

Receipt of orders	+420 577 112 021 - 20
Supply	+420 734 852 030
Economics Department	+420 777 740 034

E-mail: info@zakoturcin.cz
Web: www.zakoturcin.cz

